

KEY:



Grantee and Federal User Functionality



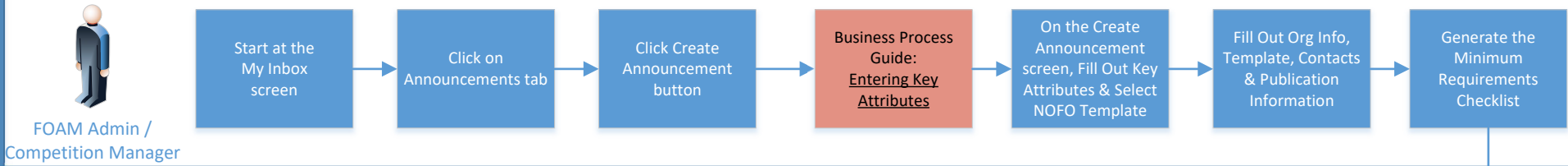
Federal User Functionality

Note: Underlined Words Are Links

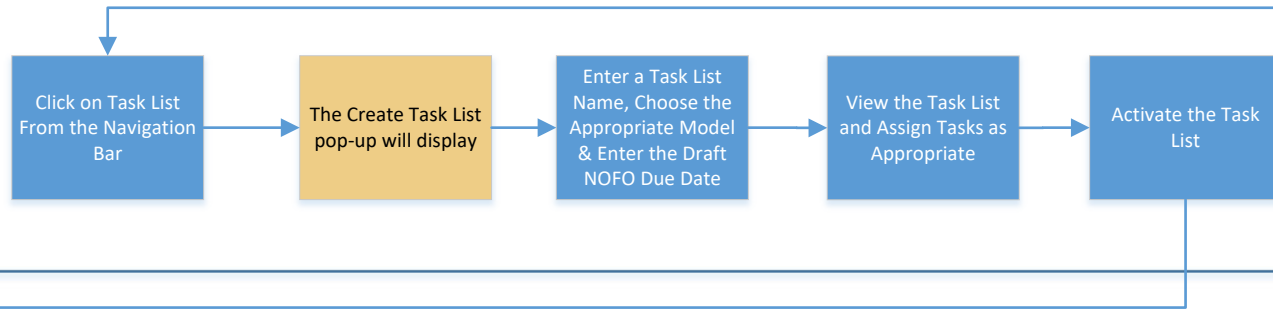
# Create Funding Opportunity (NOFO) via FOAM and Publish to Grants.gov.

FOAM Module

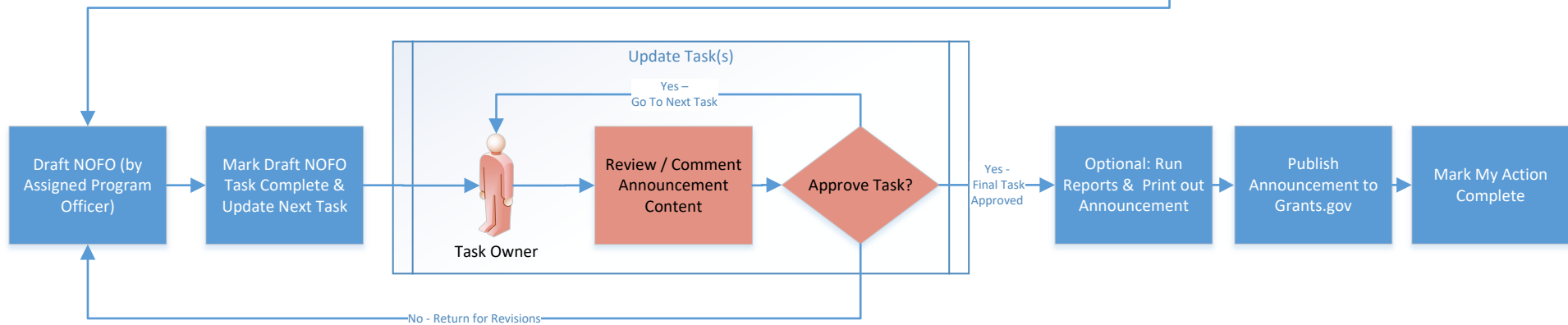
Create FOA



Create a Task List



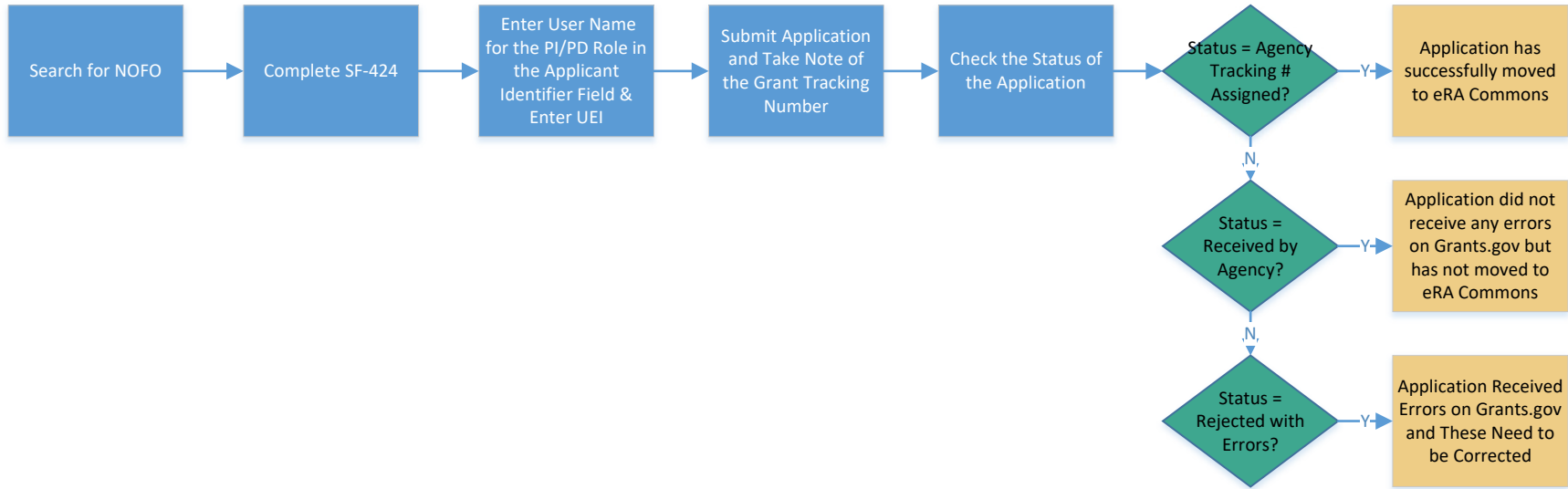
Complete the Task List



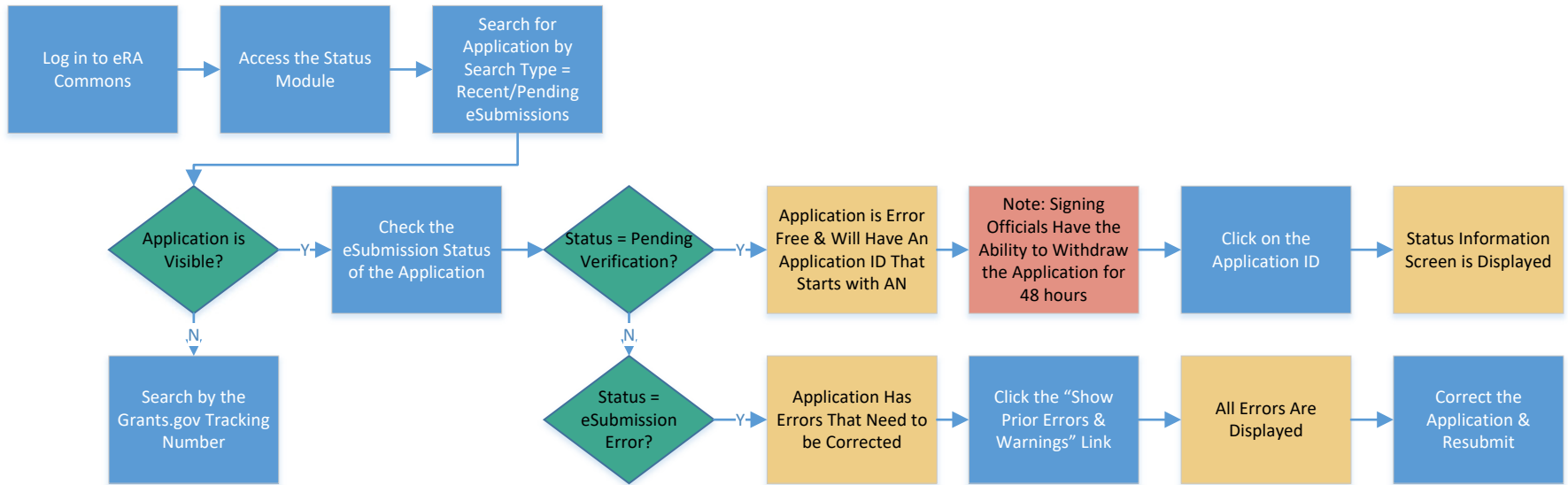
Return to Grant Life Cycle Flow

# Submit Application – Grantee Flow

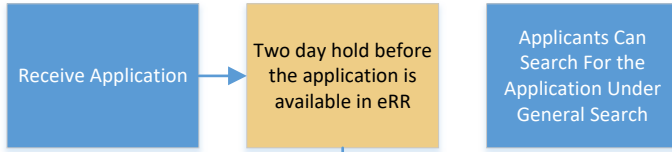
Grants.gov



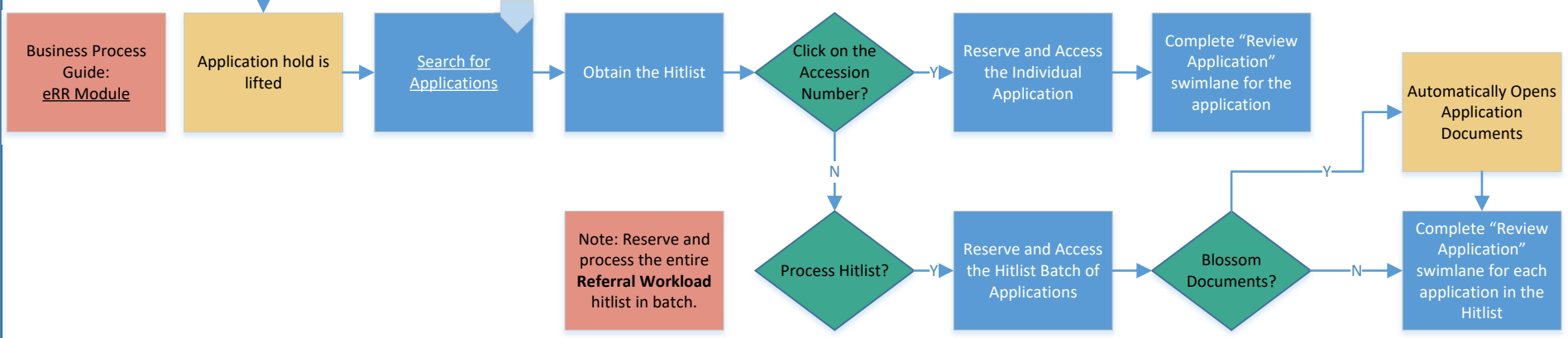
eRA Commons



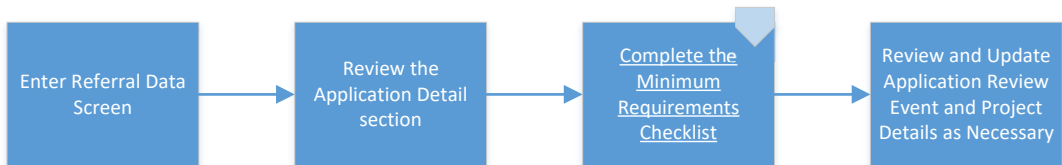
Receipt of Application (Commons)



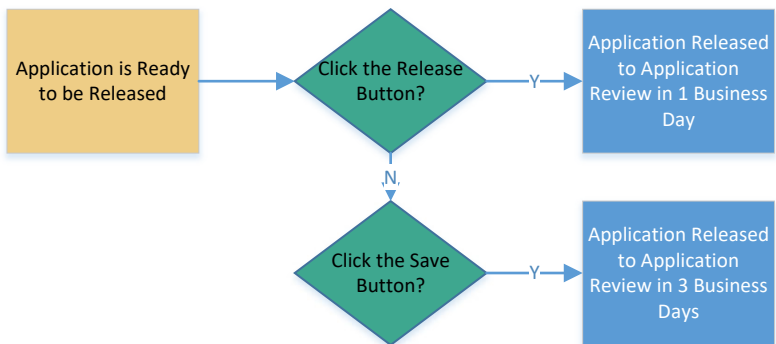
Referral Workload (eRR)



Review Application (eRR)

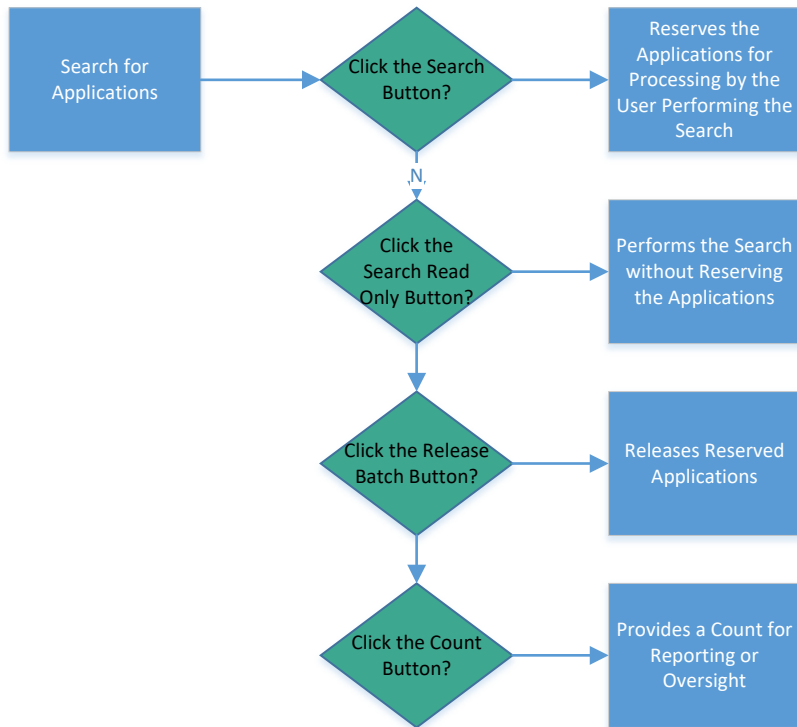


Applications Ready for Processing (eRR)



Return to Grant Life Cycle Flow

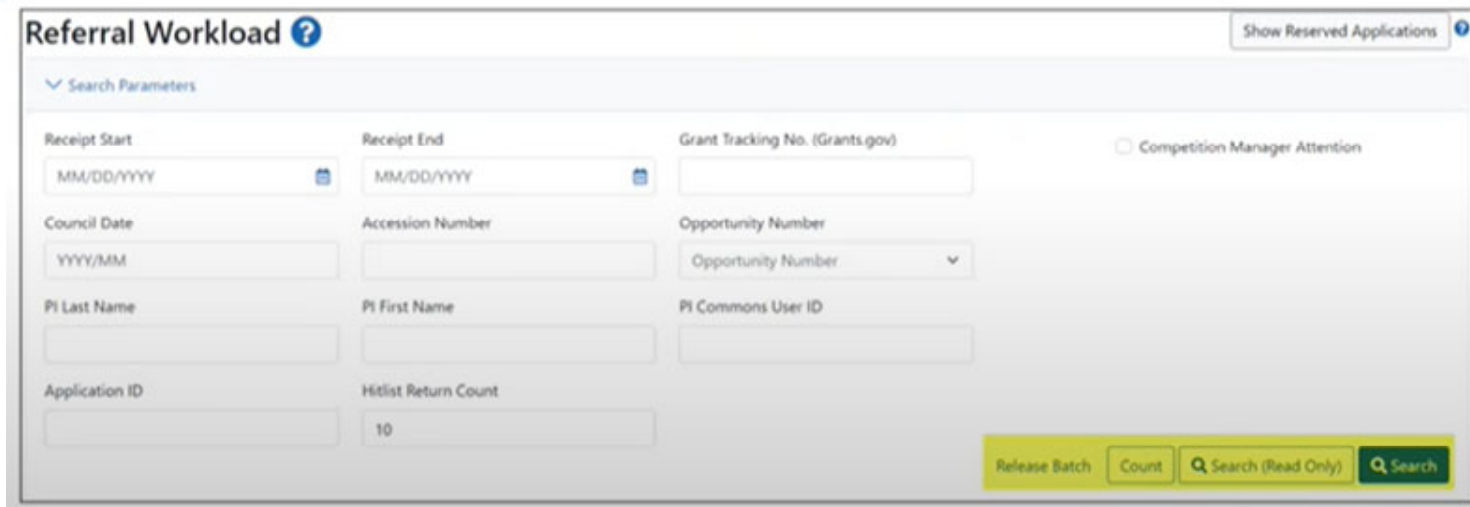
Referral Workload (eRR)



Note: Whenever the User Logs Off, Applications are Released

Return to Receive Application Flow

Screenshot

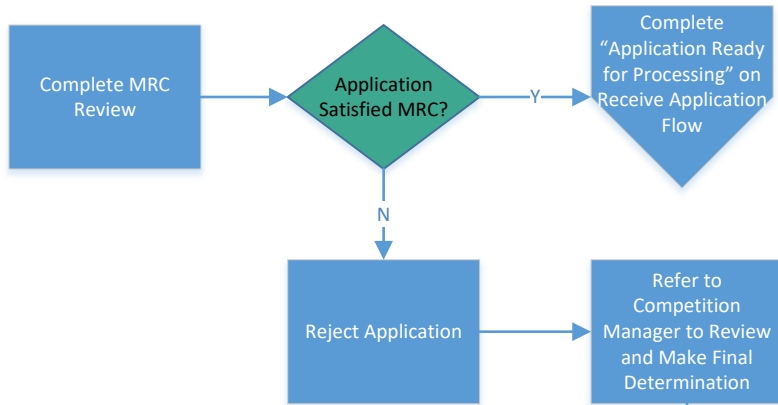


**Referral Workload** Show Reserved Applications

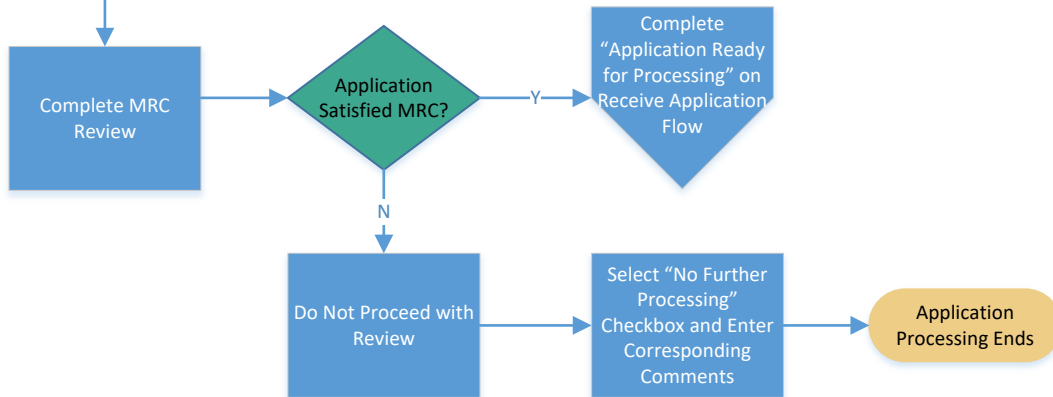
Search Parameters

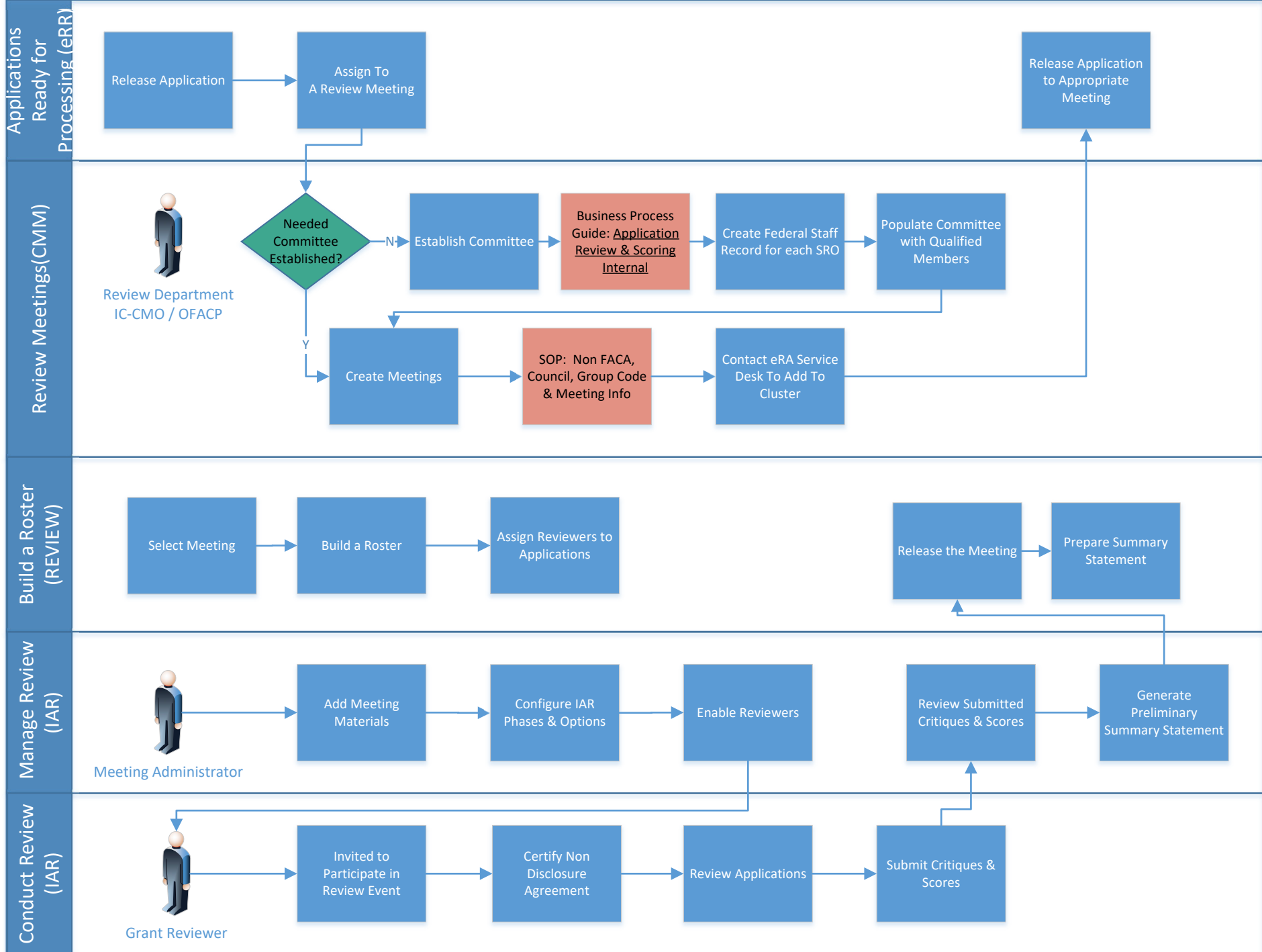
Receipt Start MM/DD/YYYY	Receipt End MM/DD/YYYY	Grant Tracking No. (Grants.gov)	<input type="checkbox"/> Competition Manager Attention
Council Date YYYY/MM	Accession Number	Opportunity Number Opportunity Number	
PI Last Name	PI First Name	PI Commons User ID	
Application ID	Hitlist Return Count 10		

Program Analyst Review

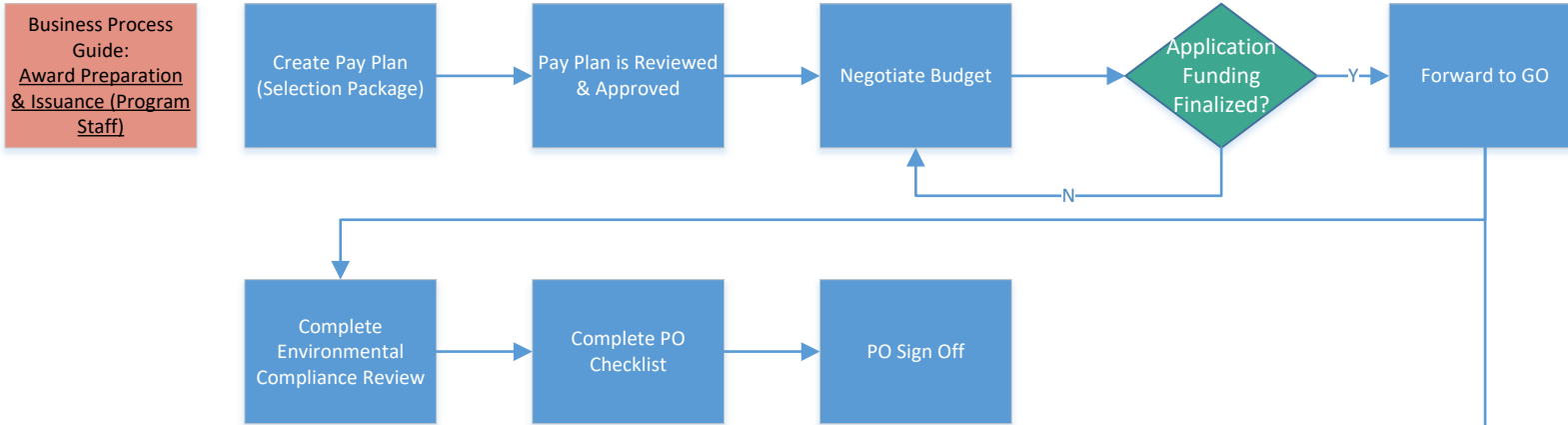


Competition Manager Review

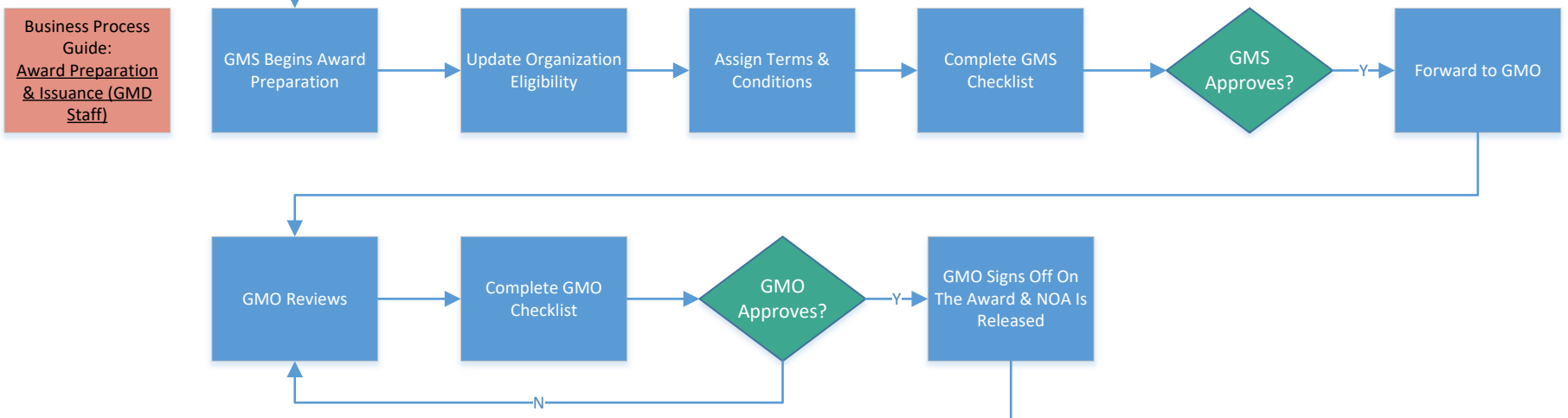




## Program Staff Process



## GMD Staff Process



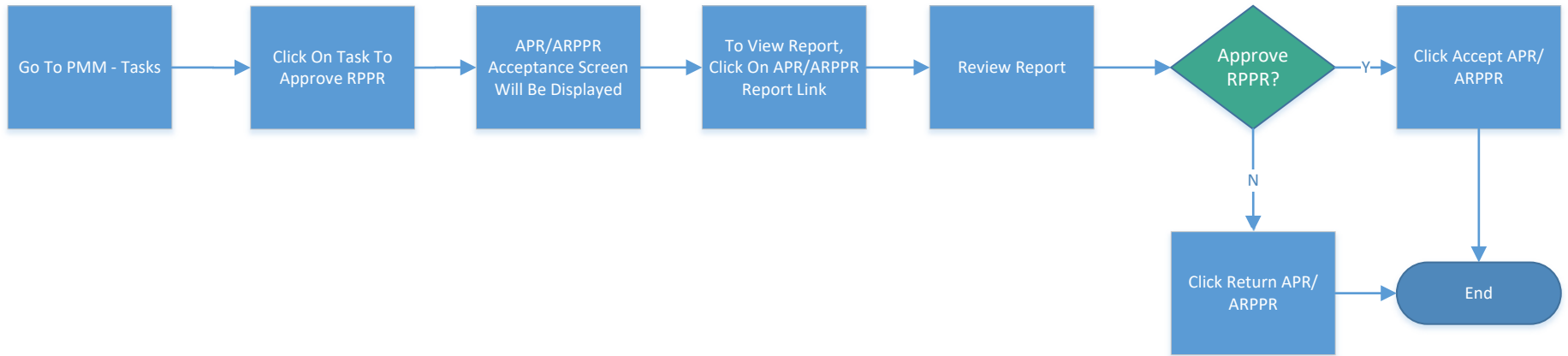
## Grantee



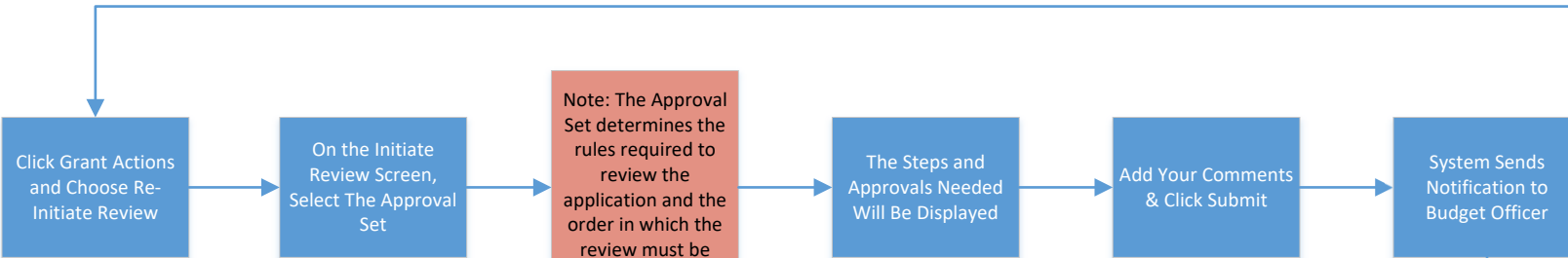
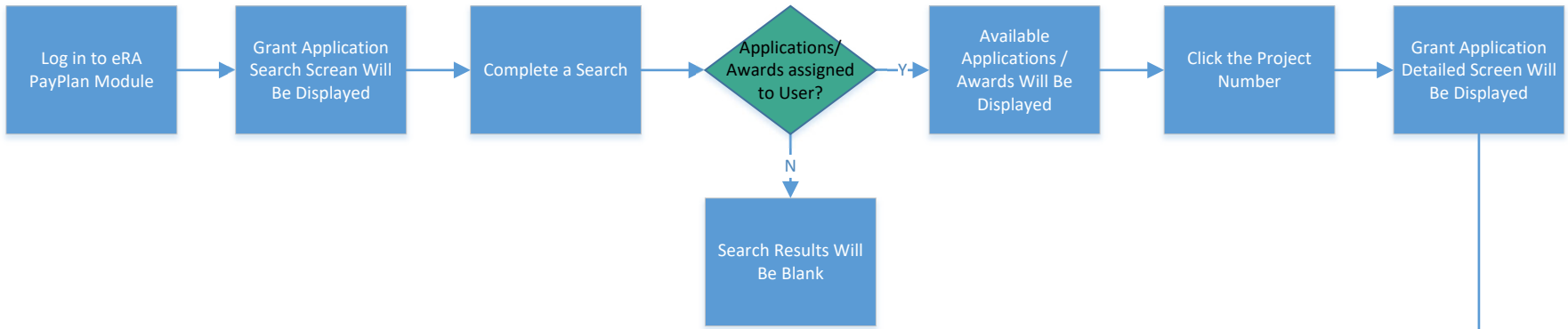
Return to Grant Life Cycle Flow



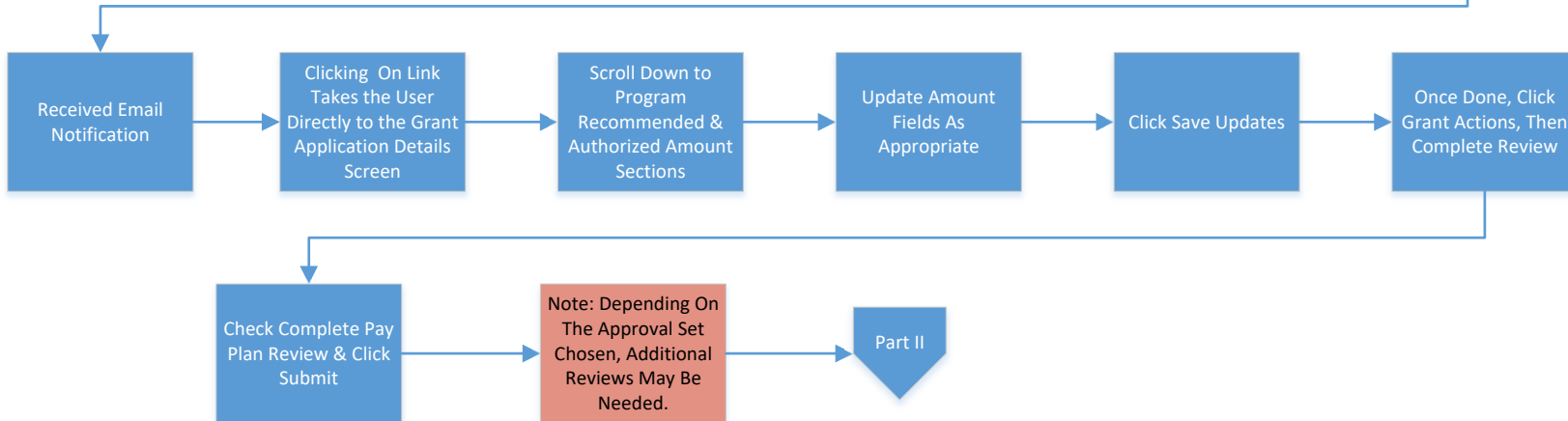
PMM Module



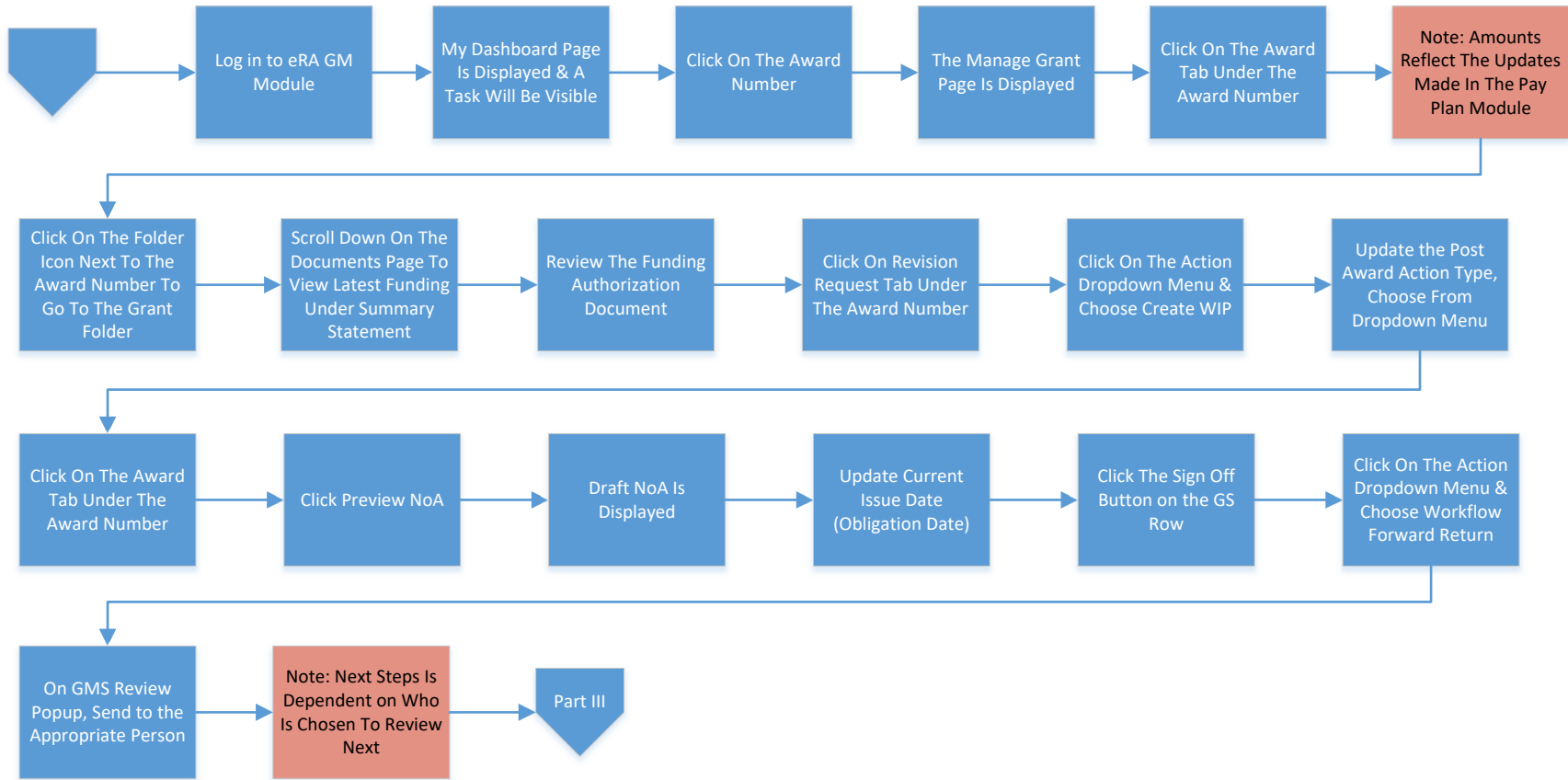
Program Staff Process

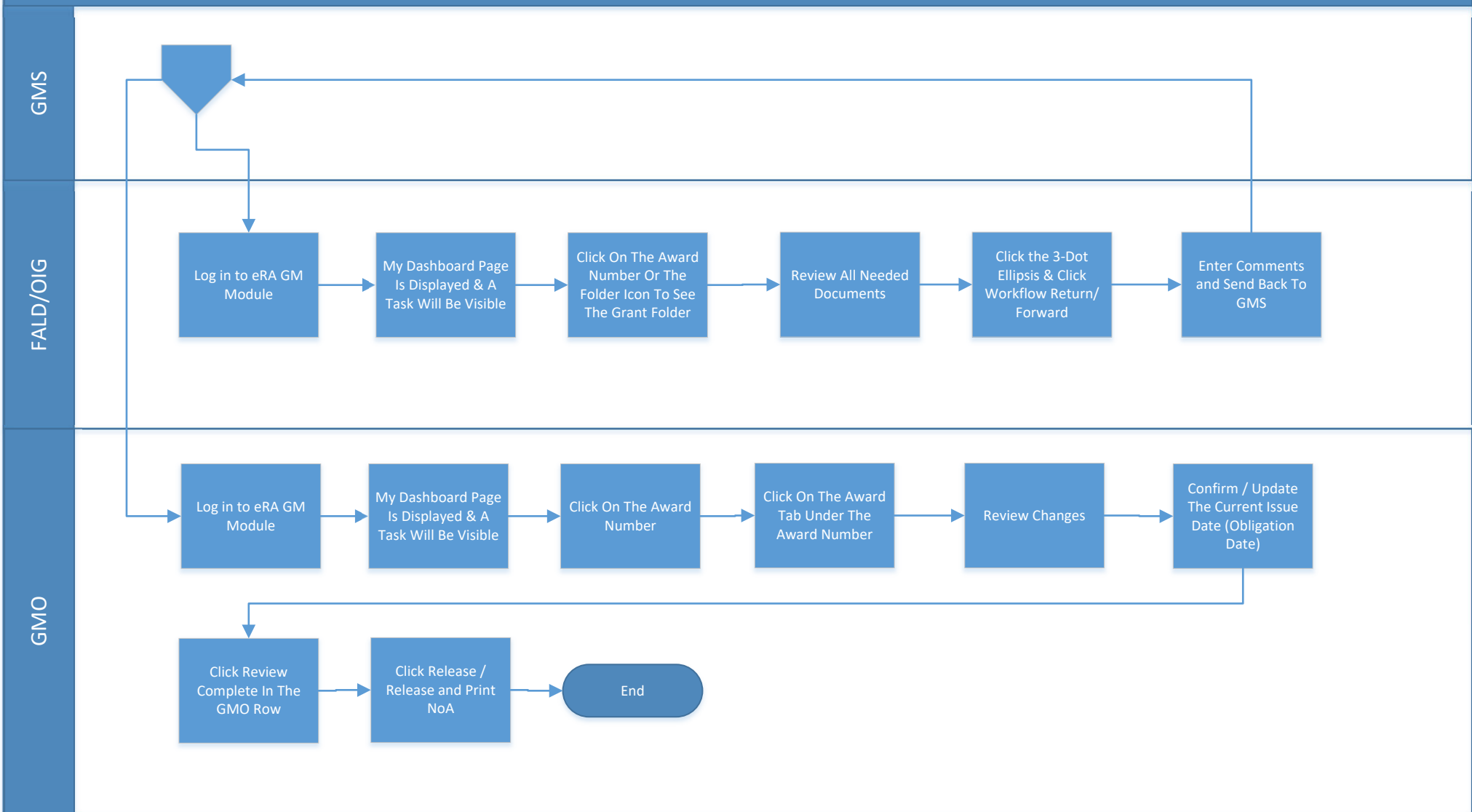


Budget Officer



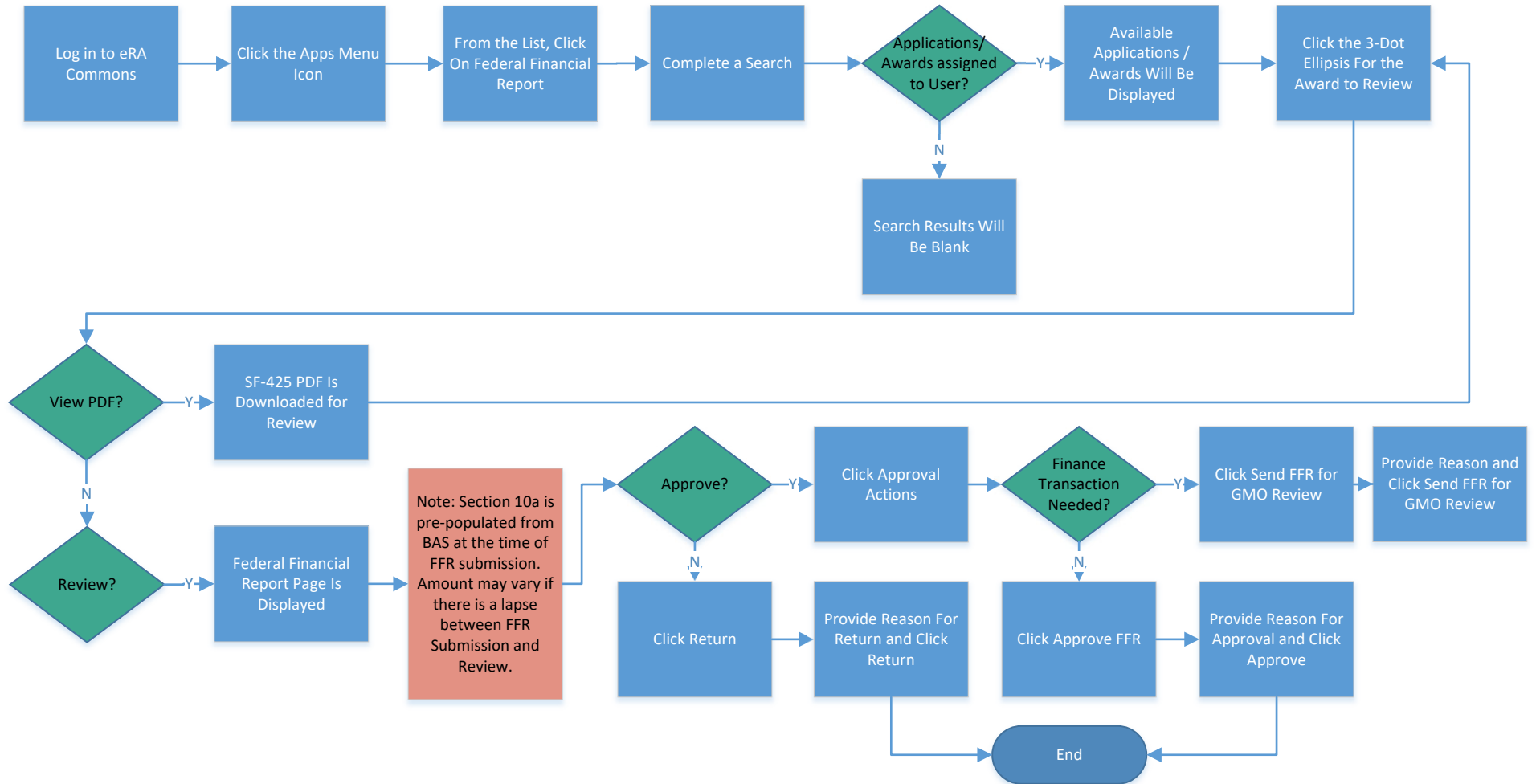
GMS Process





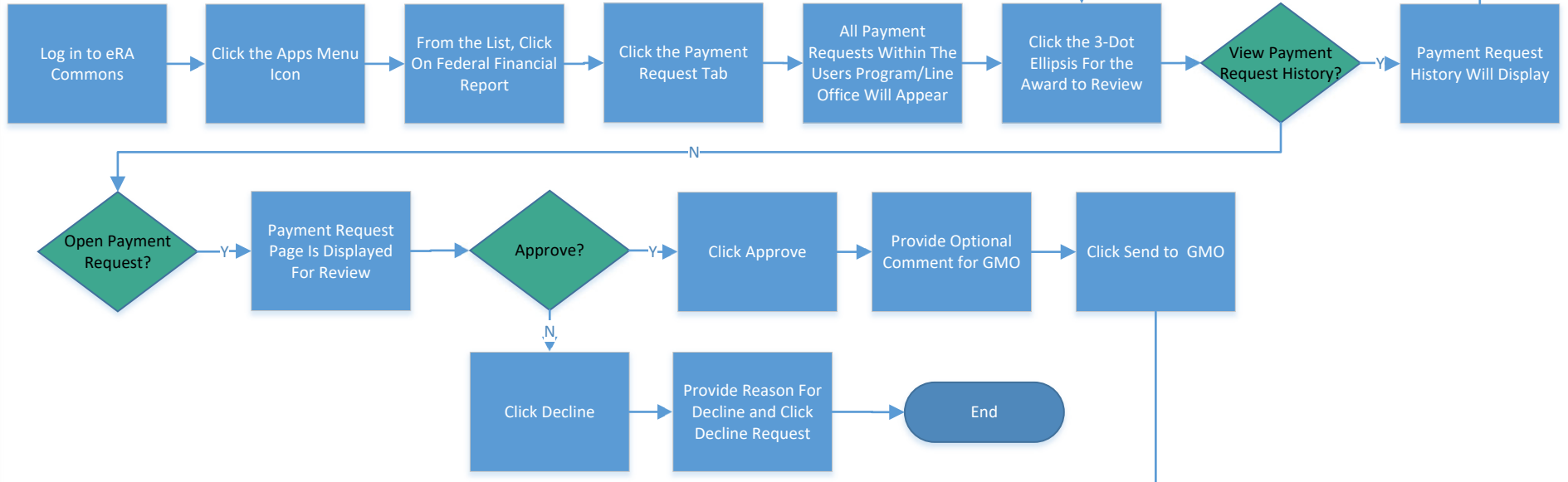
Grants Specialist

GMO

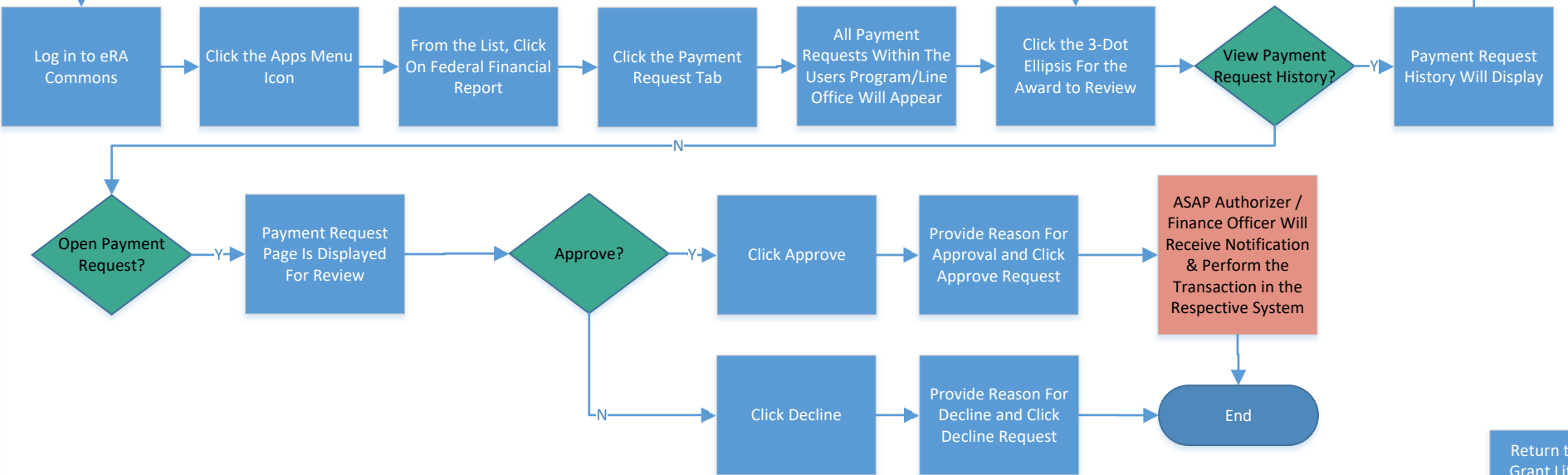


Return to Grant Life Cycle Flow

Grants Specialist



GMO



Return to Grant Life Cycle Flow